



The Vicarage, 60, High Street, Sixpenny Handley, Salisbury



A well presented detached 4 bedroom house with stunning views and ample parking in the lovely village of Sixpenny Handley.

The Vicarage, 60 High Street,
Sixpenny Handley, Salisbury,
SP5 5ND

PCM
£1,950 PCM



4



1



3

The ground floor of the accommodation comprises a large entrance hall; cloakroom with WC; 3 reception rooms; a good sized kitchen with floor mounted units, new Hotpoint electric double oven and ceramic hob and a small utility area; a door off the kitchen lead into further utility space with door to the rear garden and into a single garage with power, light and up and over door. Carpeted stairs lead to the first floor landing with cupboard housing the hot water tank; 3 large double bedrooms and 1 large single bedroom, all with fitted wardrobe and 2 with sinks; WC; bathroom with sink and bath with electric shower over.

Outside to the front is a large sweeping driveway with an area laid to lawn and ample parking. A side path leads into the church yard and there is a side gate with access to the rear garden. The rear garden is mainly laid to lawn with patio area, some raised beds and a green house. The perimeter is walled and surrounded by lots of mature trees and shrubs.

Features

- Detached house
- Four double bedrooms
- Ample Parking
- In the heart of the village
- Solar panels
- Well presented accommodation
- Attractive gardens
- Garage
- Air source heat pump
- Elevated position with stunning views

Tenancy & Restrictions

To be let unfurnished on an Assured Shorthold Tenancy (minimum term of 12 months, thereafter on a monthly basis). No smokers or sharers.

EPC Rating

C (76)

Outgoings

Council Tax: East Dorset £3786.74
(2025/26) Band F

Size

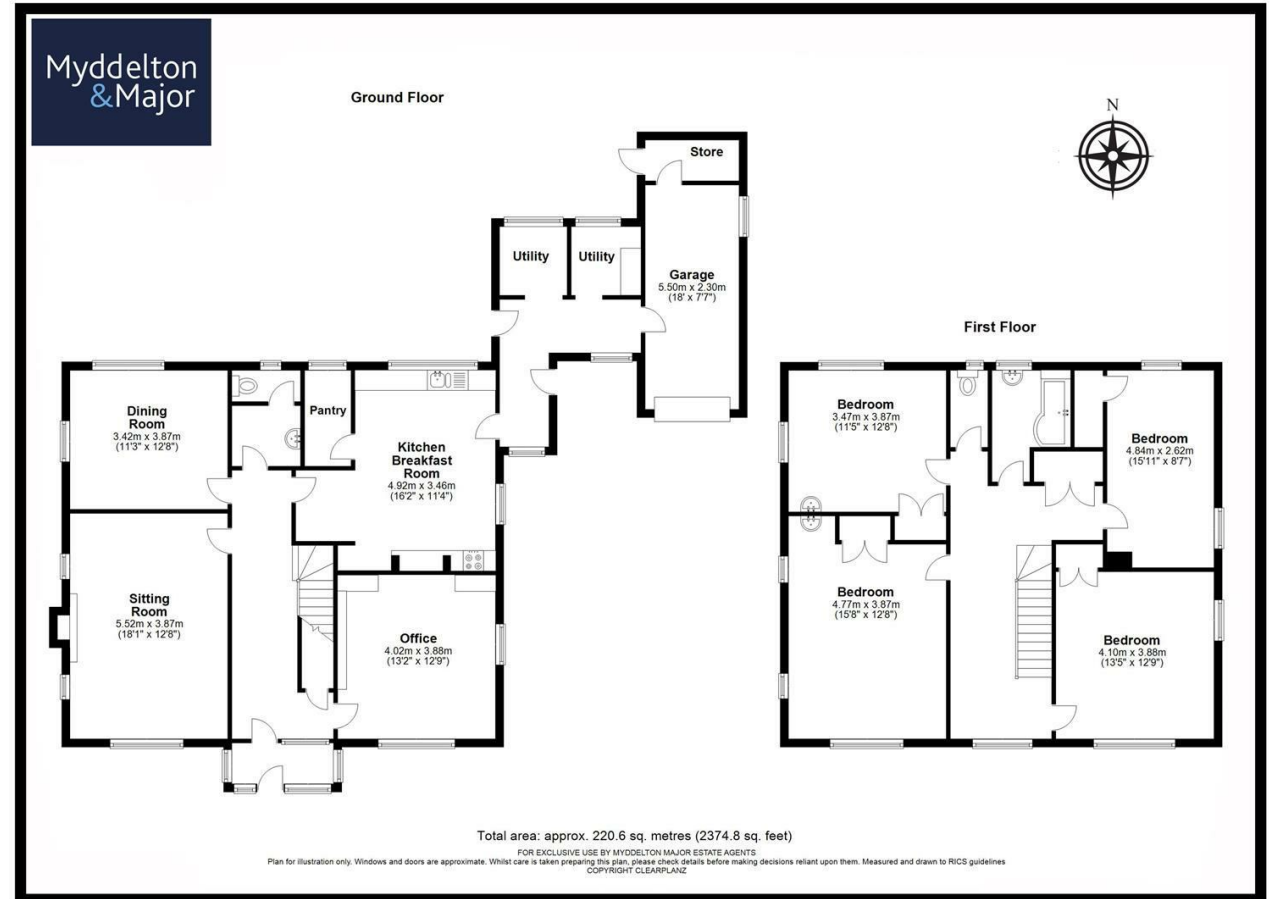
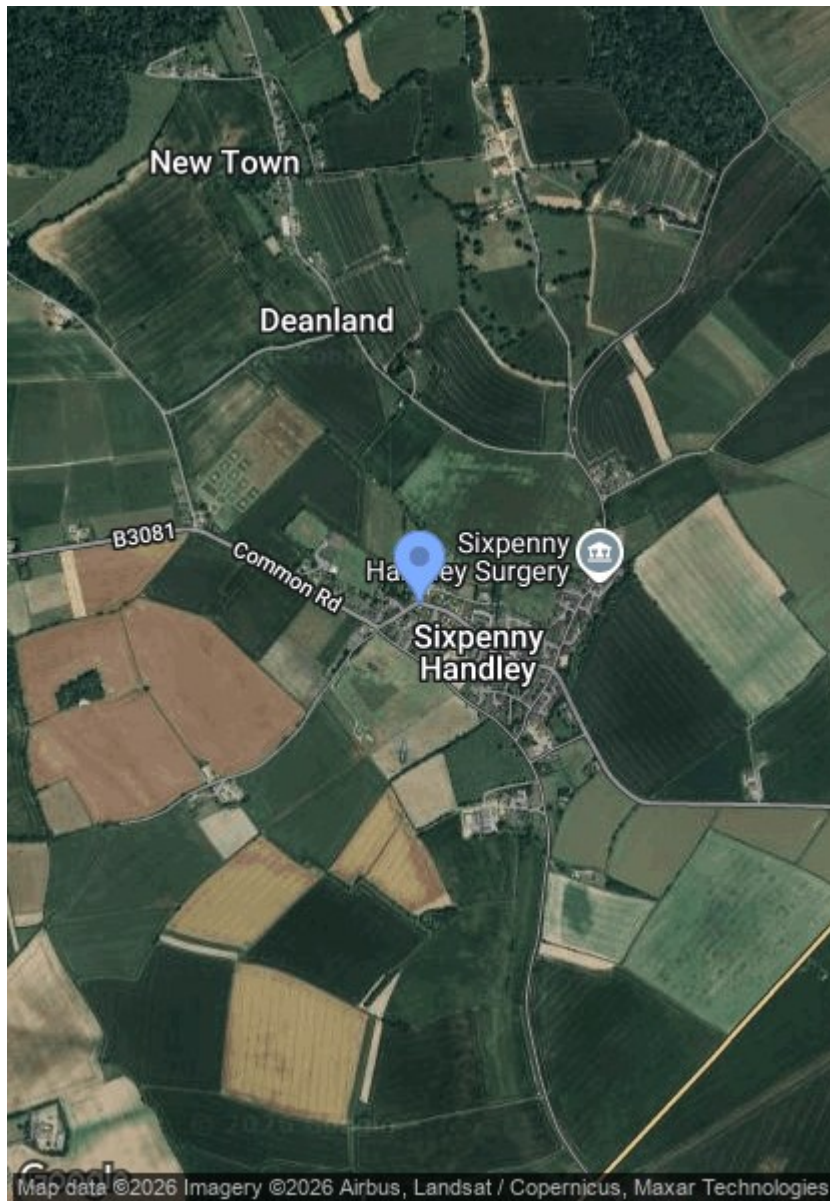
2374.00 sq ft

Location

Sixpenny Handley is set within the Cranborne Chase, an area of Outstanding Natural Beauty and picturesque countryside. The village offers a selection of shops, including a butchers and a Budgens supermarket. There is a community bar run in the sports pavilion and extensive sports facilities. There is also a local Doctors & primary school.

Further excellent facilities can be found in the Cathedral City of Salisbury (approx. 9 miles) and the market town of Blandford Forum (approx. 11 miles).





Disclaimer Notice Myddelton & Major and their clients give notice that:- i) they have no authority to make or give any representations or warranties in relation to the property, ii) these particulars do not form part of any offer or contract and must not be relied upon as statements or representations of fact. iii) any areas, measurements or distances are approximate. The text, photographs and plans are for guidance only and are not necessarily comprehensive. It should not be assumed that the property has all the necessary planning, Building Regulation or other consents, and, any services, equipment or facilities have not been tested by the agent. iv) the purchaser must satisfy themselves by inspection or otherwise.